



Ready... Set...
Install!

WiFi Your Way™ Work

Thanks for choosing Breezeline

In this guide, we'll walk you through how to set up WiFi Your Way™ Work from Breezeline. We look forward to introducing you to a whole new world of WiFi excellence.

We hope you enjoy your new business class WiFi experience from Breezeline.

What's inside?

Introducing WiFi Your Way™ Work	3
What you'll need	6
Installing your SuperPods	8
How to set up Guest Portal	11



DON'T FEEL LIKE READING?

Scan this QR code to watch our installation video.

Or visit: breezeline.com/business/wifiyourwayinstall

Introducing the future of business WiFi

Breezeline's WiFi Your Way™ Work gives your employees and customers the WiFi service they want, and the security and coverage you need. Get reliably fast and dynamic control over your WiFi experience. Setup takes just minutes, and its user-friendly App allows you to monitor and manage the WiFi access and usage in your business 24/7.



WiFi Your Way™ Work Benefits



Link
Cloud-based, patented adaptive WiFi for fast, reliable, and secure connectivity.



Keycard
Productivity insights to help managers understand employee usage and better manage their staff.



Shield
Enterprise-grade security protects small businesses from cyber threats with always-on network monitoring.



Concierge
Custom branded WiFi network that turns usage data into actionable insights to help optimize service and boost margins.



Flow
Motion-based insights provide a better understanding of activity trends, business demand and physical traffic.



App-Managed
Unparalleled control over your network from any location.

Secure, uninterrupted connectivity with WiFi Your Way™ Work

WiFi Your Way™ Work is Breezeline's revolutionary smart WiFi system that allows you to control and manage your business WiFi network through an award-winning App.



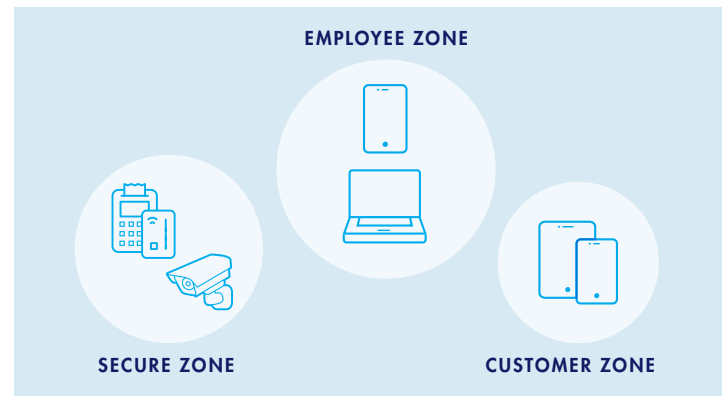
KEY FEATURES OF WIFI YOUR WAY™ WORK

- Fast, reliable, cloud-based adaptive WiFi for every corner of your business.
- Real-time online threat protection with enterprise-grade security.
- Full control over your business network, completely separate from your employee and guest WiFi networks.
- Customer and employee usage data to help optimize your business.

Customize your WiFi Zones

WiFi Your Way™ Work allows you to set up to 3 separate WiFi zones to ensure the safety of all of the devices connected to your network. A separate WiFi network name is used to access each zone.

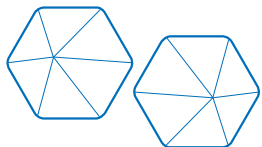
- **Secure WiFi Zone** – This zone is used for devices that require the most protection, such as point of sale (POS), security cameras, and network servers.
- **Employee WiFi Zone** – This zone can be used for your employees' devices. Online protection, content access, and Adblocking can be customized at the individual employee level.
- **Guest WiFi Zone** – This zone grants access to your guests or customers through a customized guest portal. All devices in this zone only have Internet access with no local network access.



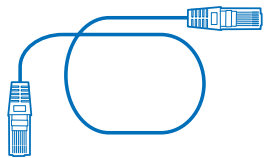
What's inside

The following instructions will take you through all the steps necessary to get your Breezeline WiFi Your Way™ Work up and running.

WHAT YOU'LL NEED



SuperPod(s)



Ethernet Cord (1)



WiFi Your Way™
Work App

Level of Difficulty:



Easy

Time to Complete:



10–15 Min

Required Steps:



5 Easy Steps

Before you begin

Before you start, follow these important steps to make sure you get the most out of WiFi Your Way™ Work:

1. Make sure your Breezeline gateway is online. If you are a new customer or upgrading your gateway, you should complete the gateway installation first, before proceeding with installing WiFi Your Way™ Work. You can find gateway instructions by visiting: breezeline.com/business/readyssetinstall
2. Write down or take a picture of the serial number of one of your SuperPods. It is a 10-digit alphanumeric code found on the back of the SuperPod.

SuperPod Serial Number (S/N) _____

3. Go to the Apple App Store or the Google Play Store on your mobile device. Search for the “WiFi Your Way™ Work” App and download it.



Download the WiFi Your Way™ Work App for iPhone or Android.

How to install your SuperPods

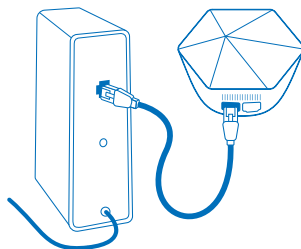
Follow these simple steps in the WiFi Your Way™ Work App to fully complete the installation of your SuperPods.

1. **Open the WiFi Your Way™ Work App and choose the “Set up” option on the App.** Read and accept the terms and conditions and follow the instructions to set up your account. Enter your full name and location, and use a valid email address. You will receive an email verification link from “Plume Support.” Click on the “Verify Email” link. Once the email address is verified, your WiFi Your Way™ Work account is created.
2. **Follow the steps as outlined on the App:**
 - Connect one SuperPod to your modem/gateway with the Ethernet cord included.
 - Restart your modem/gateway by unplugging from the wall outlet and plugging back in after 1 minute.

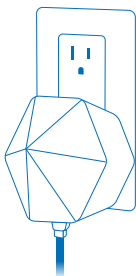


Please Note: In order for your SuperPods to connect to the App, make sure Bluetooth is enabled on your device. If the SuperPod is not connecting, check the Bluetooth settings on your device.

Connect SuperPod
To Modem / Gateway



Plug SuperPod
Into Power



3. **Set up your WiFi Zones.** Once your SuperPod is connected, the App will walk you through the creation of sign in credentials for each of your WiFi Zones.
 - **Secure Zone** – Local access to Secure Zone devices can be selectively shared with selected employees.
 - **Employee Zone** – All devices connected to the Employee WiFi Network have local network access to each other.
 - **Guest Zone** – All devices in this zone only have Internet access with no local network access. You may customize the guest log in portal after the initial set up.



Please Note: All 3 WiFi Zones need to be created during initial setup. Failure to do so will cause the App setup to fail.

4. **Place the remaining SuperPods throughout your workspace to maximize WiFi coverage.** See the Installation Pro Tips section on Pg. 10 for placement recommendations. Tap on **All Done** once all SuperPods are plugged in.



You're nearly there, just one more important final step:

You must activate WiFi Your Way™ Work! Installation will not be complete without the following step:

5. **Activate your WiFi network.** Open a browser on your connected device and visit breezeline.com/activatewifi.
 - Enter the last name associated with your Breezeline account and the Serial number (S/N) found on the back of the SuperPod.
 - Click “Activate My WiFi” button and the activation will initiate.



Congratulations!

You have completed your WiFi Your Way™ Work installation.

The screenshot shows the Breezeline activation page. At the top is the Breezeline logo. Below it is a teal header with the text 'ACTIVATE WIFI YOUR WAY'. Underneath, there is a sub-header 'One final step to get your new WiFi network set up.' The main content area contains instructions: 'To activate your new superpods, simply enter the Last name associated with your Account (Broadband account) and the SuperPod Serial Number (S/N). The Serial Number is a 10 digit alpha numeric code, found on the back of one of your SuperPods.' There are two input fields: 'Last Name' and 'Serial Number'. At the bottom right is a blue button labeled 'Activate My WiFi'.

Installation Pro Tips

Tip

- Be sure to enable App notifications.
- If you have more than one SuperPod, follow the tips on the App to identify the optimal location and add it to your WiFi network.
- Make sure one of your SuperPods stays connected to the gateway at all times.
- Make sure to activate your WiFi Network by visiting: breezeline.com/activatewifi or scanning this QR code. →



HELPFUL TIPS FOR INSTALLING YOUR SUPERPODS:

- Place your SuperPods in interior wall outlets.
- SuperPods should be placed no more than 30-40 feet apart.
- Avoid placing SuperPods too close to large furniture, mirrors, glass or metal.
- Avoid making SuperPods physically accessible to guests. Instead, use outlets that are closer to the ceiling or behind a counter.

Setting Up Your personalized Guest Sign in portal


Now that you have completed the initial WiFi Your Way™ Work setup, it's time to personalize your guest sign in portal.

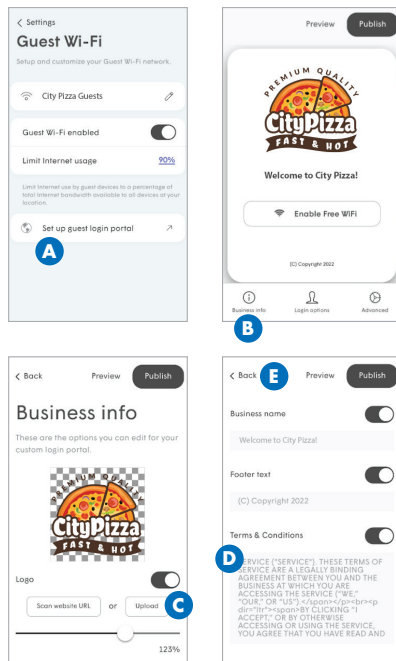
What you'll need to set up

The WiFi Your Way™ Work Guest Portal, only takes a few minutes to setup. Here's what you'll need before starting:

- **Business Image or logo** – Make sure the file you are using is less than 1MB in size and has one of the following extensions .gif, .jpeg, .png, .x-png
- **Terms and Conditions** for your guest access (you can also use the default terms provided)
- **WiFi Your Way™ Work App**
- **Company website** (your company logo can be pulled from here as well) – Optional
- **HTML color codes** for your text and background – Optional

Setting up your Business Information and Logo

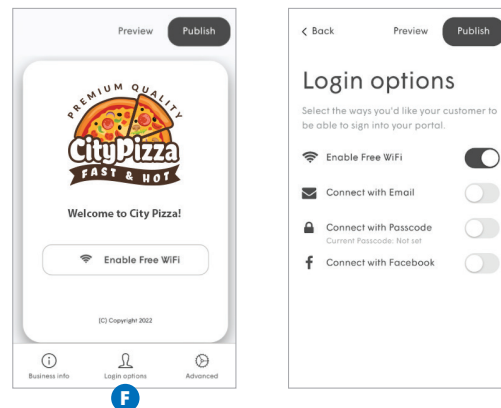
- Navigate to the **Settings** page by tapping on the gear wheel  in the top right of the home screen.
- Tap on the Guest WiFi Network Name.
- If you haven't done so already, enter the Guest WiFi Network, enable Guest access, and set a Guest speed limit.
- Tap on **Set up guest login portal** **A**.
- Tap on the **Business info** button **B**.
- Under **Logo**, use the Upload button to upload a company logo image stored on your phone **C**.
- Tap on the fields to enter your **Business name**, and **Footer text**.
- Use the default **Terms & Conditions** provided OR copy your business Terms and Conditions text onto your phone's clipboard and paste it into the Terms & Conditions field **D**.
- Scroll back up and tap on the **< Back button** **E**. Do not tap on the Done button in your browser bar. This will close the browser without saving your changes.



Set up Guest Login Options

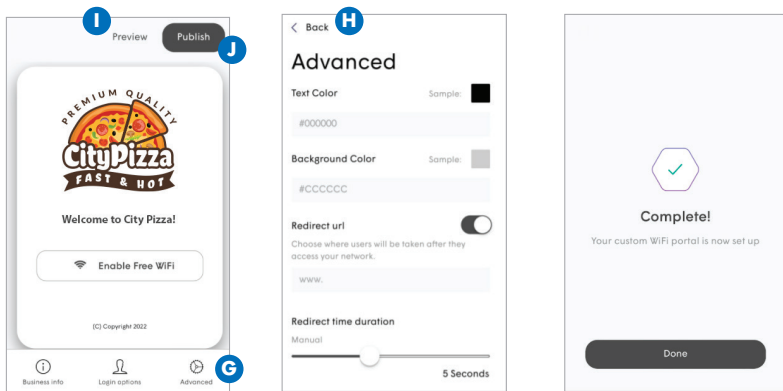
Tap on **Login options** **F** and choose the methods you want to be used by your guests to log into the guest network.

- **Enable Free WiFi** – allows guests to login without providing any information.
- **Email** – Requires the guest to provide an email address.
- **Connect with Facebook** – Require the customer to login using Facebook Connect.



Personalize guest portal

- Tap on **Advanced** **G** to change Text color, Background color, and set a redirect URL. When finished with these options, tap on the **< Back button** **H**.
- Use the **Preview** button **I** to give your guest portal a try. If you are satisfied with how it looks, tap on the **Publish** button **J** to activate the Guest portal or use the **< Back button** **H** to continue making changes.
- That's it! Your personalized guest portal is ready. You can change or modify it at any time.



Having Trouble?



Troubleshooting: Visit breezeline.com/business/support/wifiyourway to check out online resources including FAQs and set up videos.

Take some time to make sure you get the most out of the powerful WiFi Your Way™ Work experience:

- Set up profiles for all of your employees by naming each device connected to the employee zone.
- Manage online security settings for all of your connected devices.
- Create custom guest WiFi access to your network without sharing your private password.

That's it! Over the next 24 hours, your new Breezeline WiFi Your Way™ Work network will be optimized to create the best performance for your connected devices.



Need additional support?

Please visit breezeline.com/business/support/wifiyourway to check out online resources.